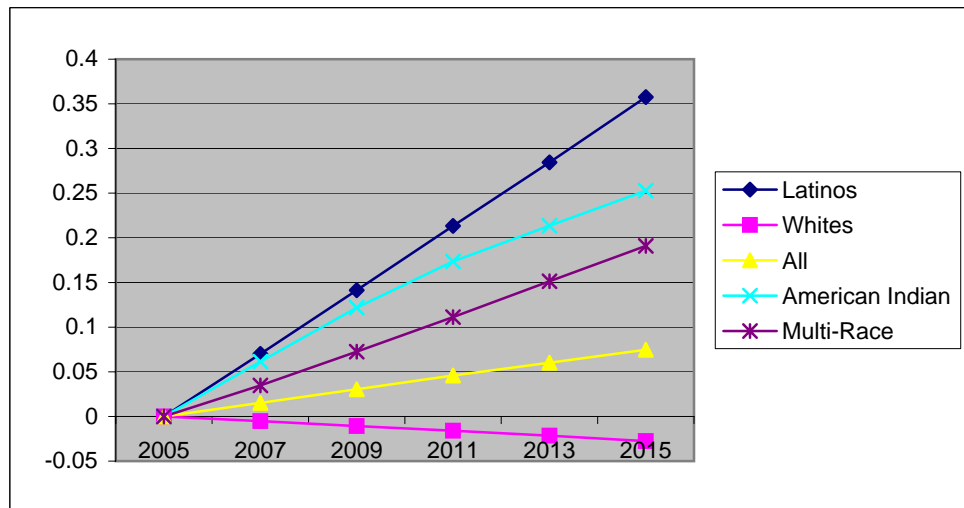


Mendocino County - Ethnicity Projections based on 2004 Data from the Demographics Unit of DOF

Year	Whites	% Growth over 2005	Hispanic	% Growth over 2005	Asian	% Growth over 2005	Multi-Race	% Growth
2005	64830	0.0%	17490	0.0%	1346	0.0%	2221	0.0%
2007	64490	-0.5%	18715	7.0%	1459	8.4%	2298	3.5%
2009	64134	-1.1%	19962	14.1%	1573	16.9%	2382	7.2%
2011	63791	-1.6%	21221	21.3%	1691	25.6%	2468	11.1%
2013	63436	-2.2%	22465	28.4%	1810	34.5%	2557	15.1%
2015	63036	-2.8%	23745	35.8%	1933	43.6%	2645	19.1%

	Pacific Islander	% Growth over 2005	American Indian	% Growth over 2005	Black	% Growth over 2005	Total Population	% Growth
2005	125	0.0%	4023	0.0%	781	0.0%	90816	0.0%
2007	125	0.0%	4270	6.1%	840	7.6%	92197	1.5%
2009	125	0.0%	4513	12.2%	899	15.1%	93588	3.1%
2011	125	0.0%	4721	17.4%	956	22.4%	94973	4.6%
2013	125	0.0%	4882	21.4%	1011	29.4%	96286	6.0%
2015	125	0.0%	5040	25.3%	1068	36.7%	97592	7.5%

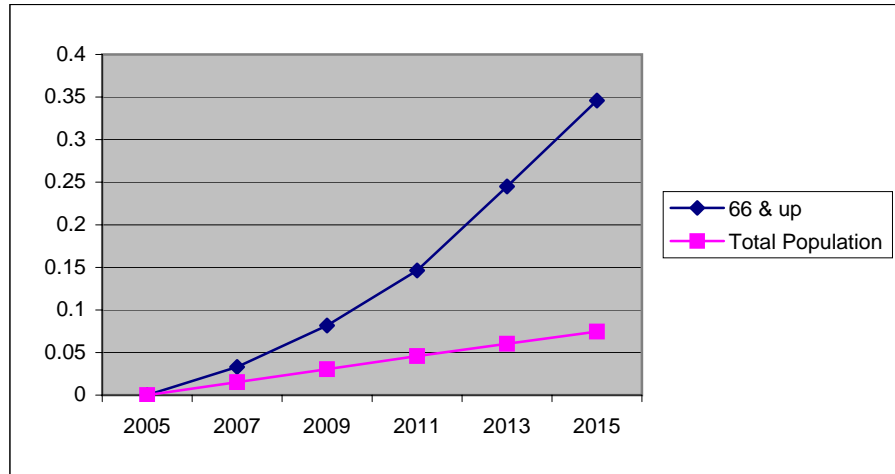


Mendocino County - Age Projections based on 2004 Data from the Demographics Unit of DOF

Year	0 to 4	% Growth over 2005	5 to 13	% Growth over 2005	14 to 17	% Growth over 2005	18 to 24	% Growth
2005	5619	0.0%	10150	0.0%	5507	0.0%	9855	0.0%
2007	6006	6.9%	9948	-2.0%	5227	-5.1%	10101	2.5%
2009	6287	11.9%	9963	-1.8%	4885	-11.3%	10039	1.9%
2011	6534	16.3%	10264	1.1%	4704	-14.6%	9627	-2.3%
2013	6730	19.8%	10689	5.3%	4509	-18.1%	9247	-6.2%
2015	6864	22.2%	11237	10.7%	4457	-19.1%	8798	-10.7%

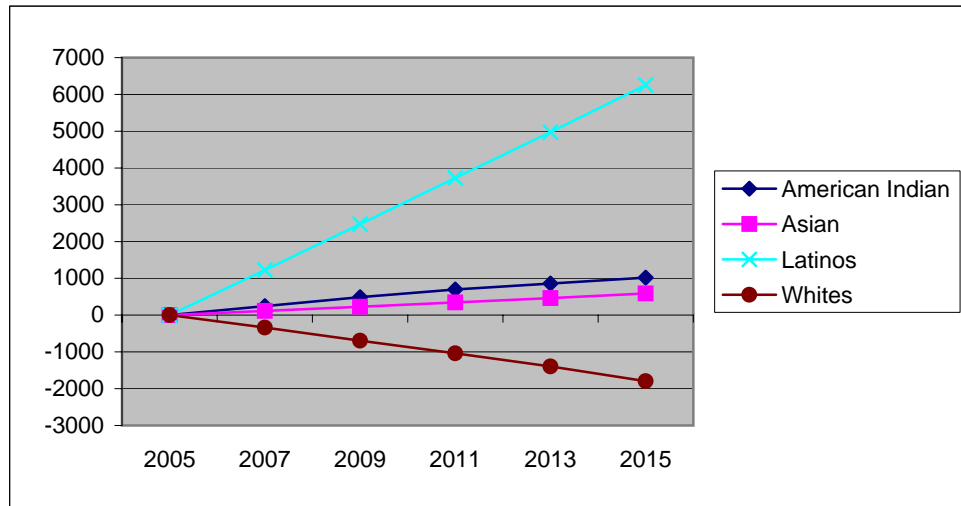
	25 to 39	% Growth over 2005	40 to 65	% Growth over 2005	66 & up	% Growth over 2005	Total Population	% Growth
2005	15214	0.0%	32741	0.0%	11730	0.0%	90816	0.0%
2007	15926	4.7%	32871	0.4%	12118	3.3%	92197	1.5%
2009	17000	11.7%	32725	0.0%	12689	8.2%	93588	3.1%
2011	17896	17.6%	32502	-0.7%	13446	14.6%	94973	4.6%
2013	18976	24.7%	31531	-3.7%	14604	24.5%	96286	6.0%
2015	19937	31.0%	30512	-6.8%	15787	34.6%	97592	7.5%

Change	
0 to 4	1245
5 to 13	1087
14 to 17	-1050
18 to 24	-1057
25 to 39	4723
40 to 65	-2229
66 & up	4057



Year	Whites	Change vs. 2005	Hispanic	Change	Asian	Change	Multi-Race	Change
2005	64830	0	17490	0	1346	0	2221	0
2007	64490	-340	18715	1225	1459	113	2298	77
2009	64134	-696	19962	2472	1573	227	2382	161
2011	63791	-1039	21221	3731	1691	345	2468	247
2013	63436	-1394	22465	4975	1810	464	2557	336
2015	63036	-1794	23745	6255	1933	587	2645	424

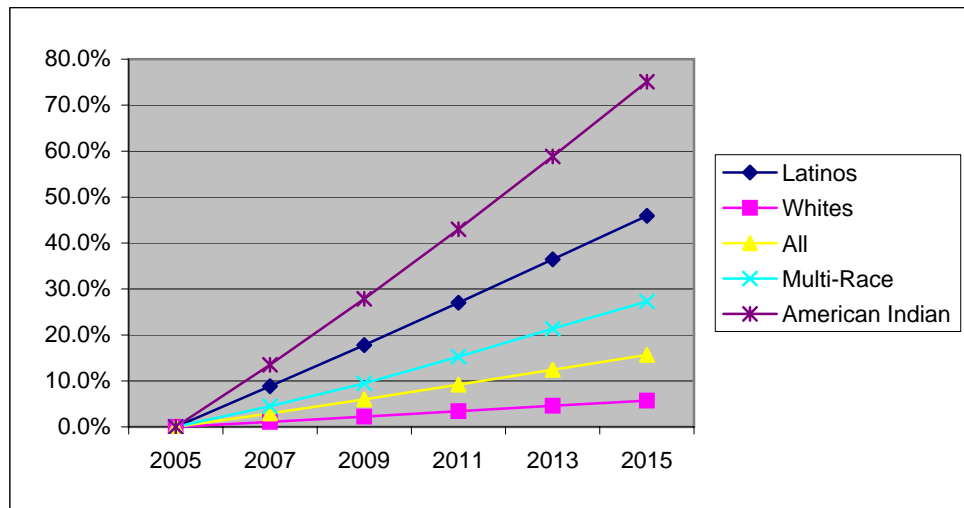
	Pacific Islander		American Indian		Black		Total Population	
2005	125	0	4023	0	781	0	90816	0
2007	125	0	4270	247	840	59	92197	1381
2009	125	0	4513	490	899	118	93588	2772
2011	125	0	4721	698	956	175	94973	4157
2013	125	0	4882	859	1011	230	96286	5470
2015	125	0	5040	1017	1068	287	97592	6776



Lake County - Ethnicity Projections based on 2004 Data from the Demographics Unit of DOF

Year	White	% Growth over 2005	Latino	% Growth over 2005	Asian	% Growth over 2005	Multi-Race	% Growth
2005	49132	0.0%	9000	0.0%	583	0.0%	1553	0.0%
2007	49662	1.1%	9795	8.8%	617	5.8%	1623	4.5%
2009	50222	2.2%	10601	17.8%	655	12.3%	1700	9.5%
2011	50803	3.4%	11430	27.0%	692	18.7%	1790	15.3%
2013	51382	4.6%	12281	36.5%	727	24.7%	1885	21.4%
2015	51941	5.7%	13133	45.9%	761	30.5%	1977	27.3%

	Pacific Islander	% Growth over 2005	American Indian	% Growth over 2005	Black	% Growth over 2005	Total Population	% Growth
2005	94	0.0%	2335	0.0%	1689	0.0%	64386	0.0%
2007	94	0.0%	2650	13.5%	1833	8.5%	66274	2.9%
2009	94	0.0%	2985	27.8%	1989	17.8%	68246	6.0%
2011	94	0.0%	3339	43.0%	2151	27.4%	70299	9.2%
2013	94	0.0%	3709	58.8%	2317	37.2%	72395	12.4%
2015	94	0.0%	4088	75.1%	2488	47.3%	74482	15.7%

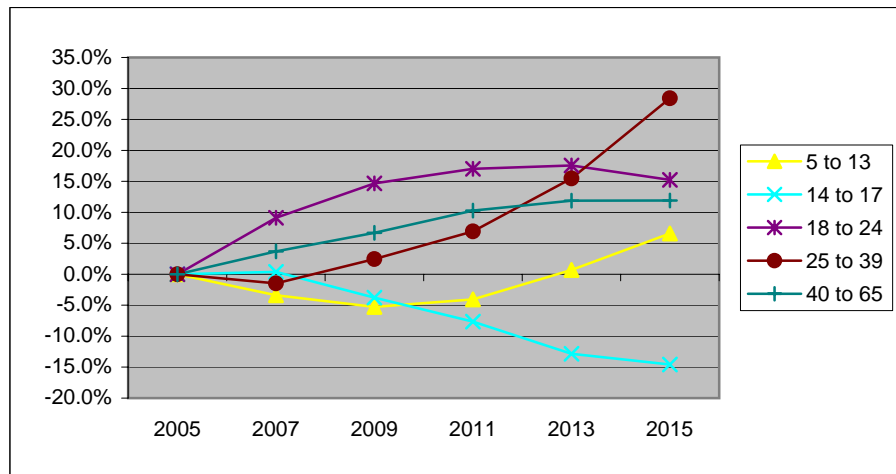


Lake County - Age Projections based on 2004 Data from the Demographics Unit of DOF

Year	0 to 4	% Growth over 2005	5 to 13	% Growth over 2005	14 to 17	% Growth over 2005	18 to 24	% Growth
2005	3203	0.0%	7364	0.0%	4283	0.0%	5420	0.0%
2007	3442	7.5%	7114	-3.4%	4299	0.4%	6317	9.1%
2009	3779	18.0%	6976	-5.3%	4121	-3.8%	6866	14.7%
2011	4111	28.3%	7065	-4.1%	3955	-7.7%	7097	17.0%
2013	4405	37.5%	7415	0.7%	3733	-12.8%	7152	17.6%
2015	4599	43.6%	7849	6.6%	3659	-14.6%	6922	15.2%

	25 to 39	% Growth over 2005	40 to 65	% Growth over 2005	66 & up	% Growth over 2005	Total Population	% Growth
2005	8671	0.0%	24206	0.0%	11239	0.0%	64386	0.0%
2007	8542	-1.5%	25097	3.7%	11463	2.0%	66274	2.9%
2009	8883	2.4%	25827	6.7%	11794	4.9%	68246	6.0%
2011	9270	6.9%	26691	10.3%	12110	7.7%	70299	9.2%
2013	10013	15.5%	27084	11.9%	12593	12.0%	72395	12.4%
2015	11134	28.4%	27090	11.9%	13229	17.7%	74482	15.7%

Change	
0 to 4	1396
5 to 13	485
14 to 17	-624
18 to 24	1502
25 to 39	2463
40 to 65	2884
66 & up	1990



Year	Whites	Change vs. 2005	Hispanic	Change	Asian	Change	Multi-Race	Change
2005	49132	0	9000	0	583	0	1553	0
2007	49662	530	9795	795	617	34	1623	70
2009	50222	1090	10601	1601	655	72	1700	147
2011	50803	1671	11430	2430	692	109	1790	237
2013	51382	2250	12281	3281	727	144	1885	332
2015	51941	2809	13133	4133	761	178	1977	424

	Pacific Islander	American Indian	Black	Total Population		
2005	94	0	2335	0	64386	
2007	94	0	2650	315	66274	1888
2009	94	0	2985	650	68246	3860
2011	94	0	3339	1004	70299	5913
2013	94	0	3709	1374	72395	8009
2015	94	0	4088	1753	74482	10096

