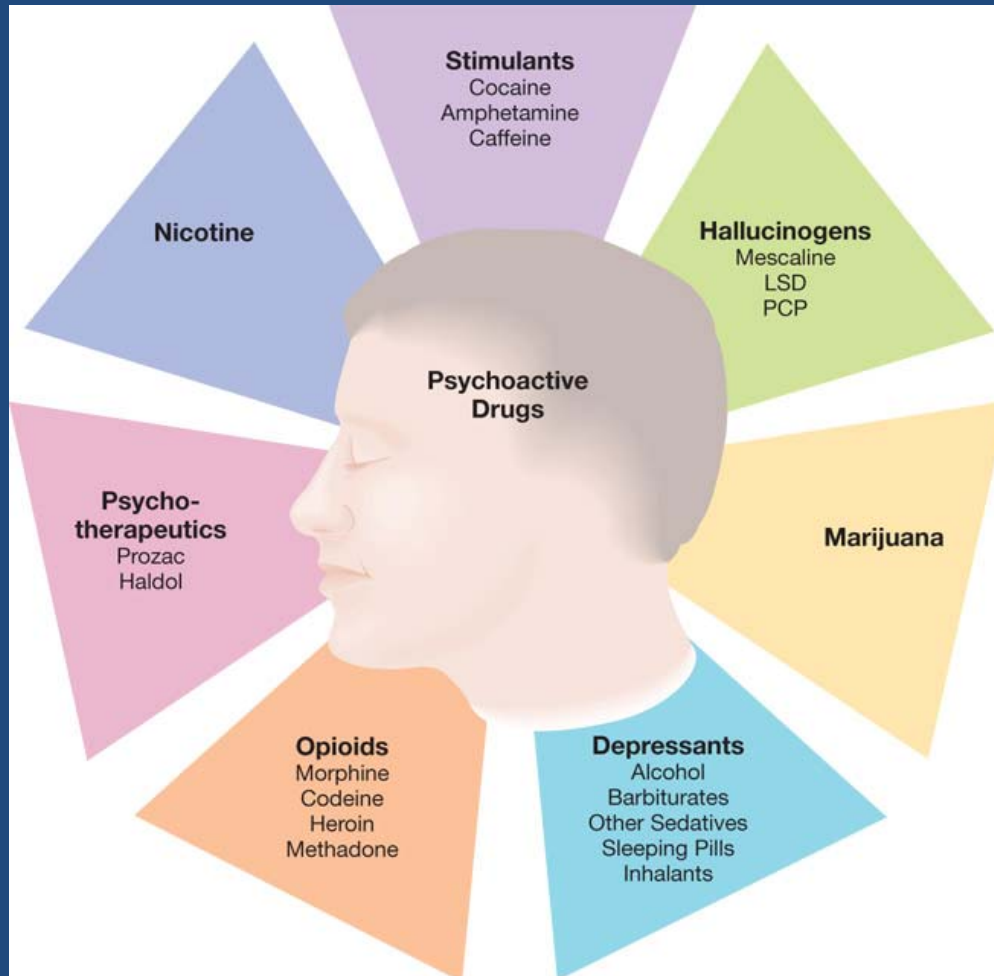


Drugs can be categorized by their major effects

stimulants; depressants; opioids; hallucinogens; psychotherapeutics; marijuana; nicotine



Uppers, Downers, Hallucinogens

UPPERS	DOWNERS	HALLUCINOGENS
Stimulants Amphetamines Caffeine	Depressants Sedatives Alcohol	Hallucinogens LSD Psilocybin
NICOTINE		
	OPIATES	
MARIJUANA		

US Drug Enforcement Administration (DEA) Schedule of Controlled Drugs

Schedule I

- A high potential for abuse.
- No currently accepted medical use in treatment in the United States.
- A lack of accepted safety for use of the drug or other substance under medical supervision.

Examples of Schedule I substances include heroin, lysergic acid diethylamide (LSD), marijuana, and methaqualone.

Schedule II

- A high potential for abuse.
- A currently accepted medical use in treatment in the United States or a currently accepted medical use with severe restrictions.
- Abuse may lead to severe psychological or physical dependence.

Examples of Schedule II substances include morphine, phencyclidine (PCP), cocaine, methadone, and methamphetamine.

Schedule III

- Less potential for abuse than the drugs or other substances in schedules I and II.
- A currently accepted medical use in treatment in the United States.
- Abuse of may lead to moderate or low physical dependence or high psychological dependence.

Examples of Schedule III substances include Anabolic steroids, codeine and hydrocodone with aspirin or Tylenol®, and some barbiturates.

Schedule IV

- A low potential for abuse relative to the drugs or other substances in Schedule III.
- A currently accepted medical use in treatment in the United States.
- Abuse may lead to limited physical dependence or psychological dependence relative to the drugs or other substances in Schedule III.

Examples of drugs included in schedule IV are Darvon®, Talwin®, Equanil®, Valium®, and Xanax®.

Schedule V

- A low potential for abuse relative to the drugs or other substances in Schedule IV.
- A currently accepted medical use in treatment in the United States.
- Abuse of the drug or other substances may lead to limited physical dependence or psychological dependence relative to the drugs or other substances in Schedule IV.

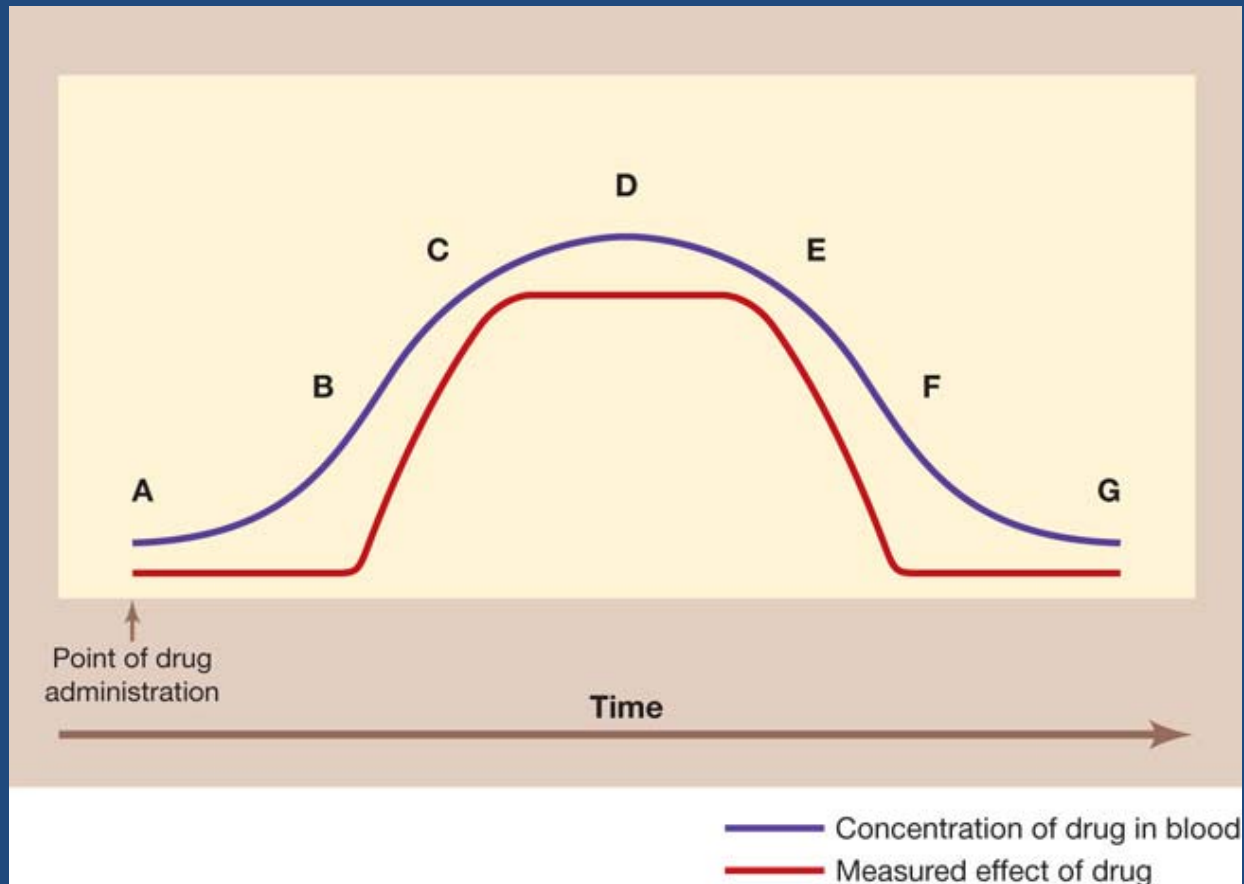
Examples of Schedule V drugs include Cough medicines with codeine.

Drugs have both

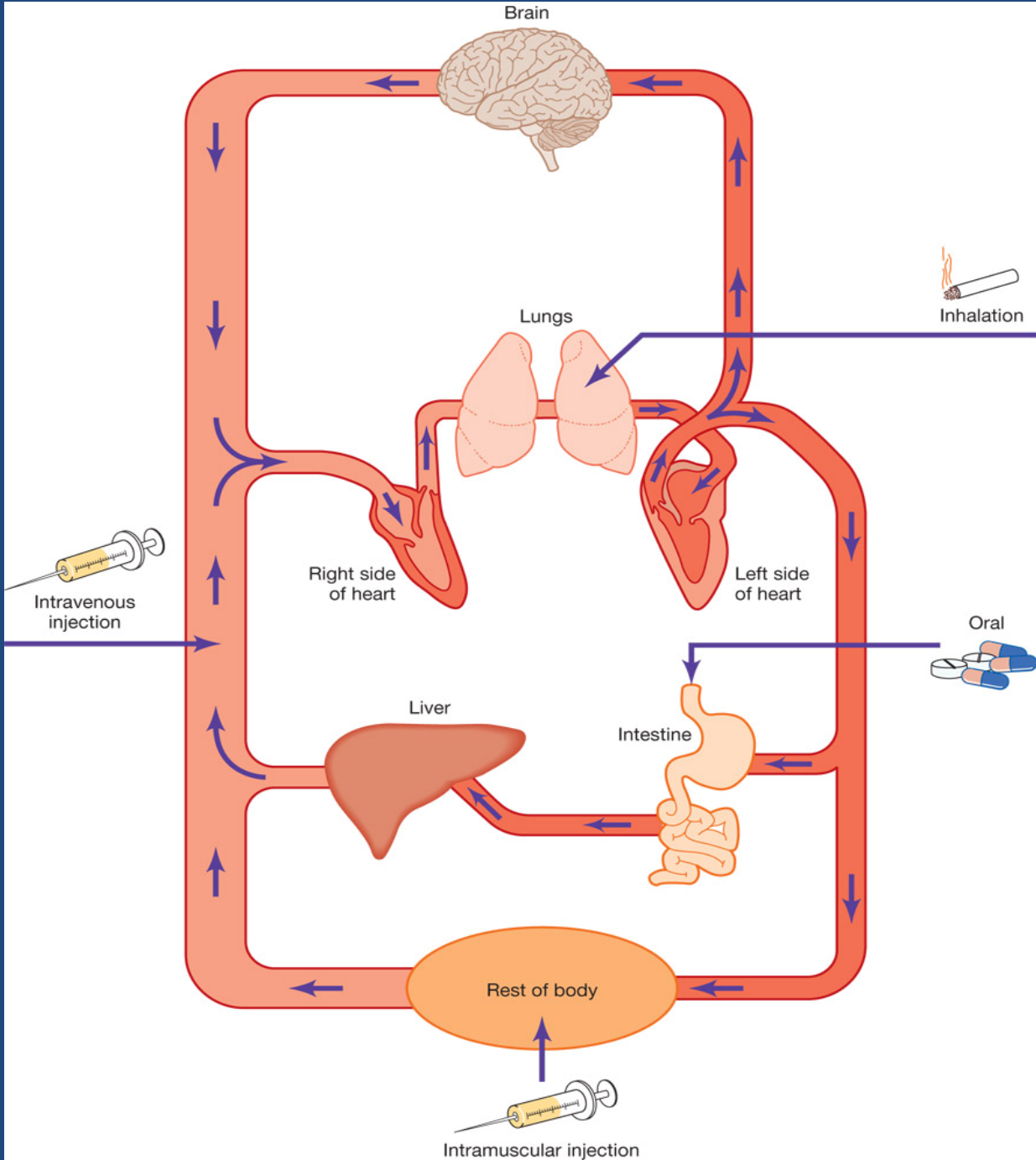
specific effects, those related to the concentration of a particular chemical, and

nonspecific effects, those influenced by expectations, experience, and setting (set and setting)

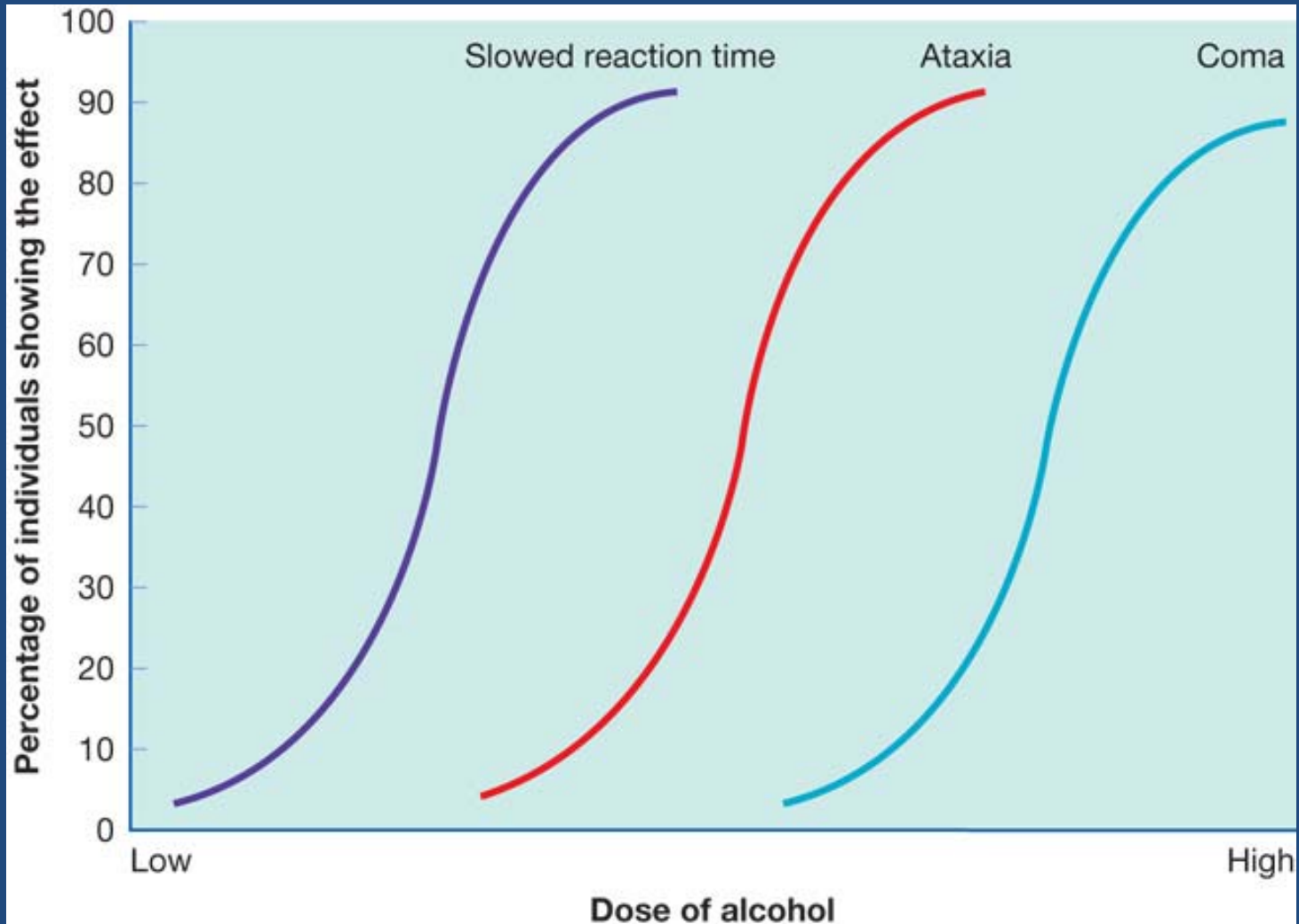
Time Dependent Factors



Routes of drug administration



Dose-Response Relationship



Tolerance

pharmacokinetic tolerance (drug disposition tolerance— increases enzyme – CYP 450 activity in the liver)

pharmacodynamic (neuronal level – leads to withdrawal syndrome)

behavioral tolerance (adaptation)

Categories of Toxicity

physiological

acute and chronic

behavioral

page 31 - DAWN data

Drug Names

the chemical name

the generic name

the brand name

<http://en.wikipedia.org/wiki/Cyclobenzaprine>

www.drugs.com

Use, Misuse, Abuse

Drug use is....

- Knowing the effective dose for the goal...
 - Knowing a what dose the drug would be toxic (lethal dose)...
 - Knowing the safety margin (lowest dose producing desired effects in most people and lowest dose producing some unacceptable toxic side effects)
 - Knowing the potential side effects (effects not relevant to the identified need; THC and recreational user vs. cancer patient)
-
- Knowing its effects/limits of usefulness
 - Knowing why you are taking it and what the various effects of the drug are
 - Minimizing consequences of side effects
 - Use within limits of benefit (no interference with major areas of your life)
 - Stop using when intended/desired effects are achieved (no compulsion to use beyond original intended effects)
 - Use in conjunction with other helpful modalities (no dependence, unless there are no other alternatives)

Drug Misuse; Drug Abuse

Using a drug in ways...

- For which it was not intended
- That will lead to short- or long-term harm to the user or others
- That result in the user no longer being responsible for or in control of his or her thoughts, feelings or behavior

DSM-IV CRITERIA FOR DRUG ABUSE

A maladaptive pattern of substance use leading to clinically significant impairment or distress, as manifested by one (or more) of the following, occurring within a 12-month period:

1. *Recurrent* substance use resulting in failure to fulfill major role obligations at work, school, or home.
2. *Recurrent* substance use in situations in which it is physically hazardous.
3. *Recurrent* substance-related legal problems.
4. *Continued* substance use despite having persistent or recurrent social or interpersonal problems caused by the effects of the substance.